

Clearwater Spas

Handcrafted. Innovative Design.



CONTENT

2	The Clearwater Difference
5	Water Care
7	CLEAR
8	Energy Efficiency
10	Resort Series
14	Beachcraft Series
18	Northwest Series
22	Fourwinds Series
28	Starlight Series
30	Swim Series
34	Exclusive Features
37	Spa Control
38	Colors & Cabinets
40	Hydrotherapy Massage
44	Color Therapy

THE CLEARWATER DIFFERENCE



Clearwater Spas has been a proud US manufacturer since 1976 serving all of North America and Europe. All our spas are proudly made in the USA in either our Spokane, WA or Smyrna, TN factories.

All Clearwater Spas are designed with E-Smart technology. This symbol signifies the highest energy efficiencies, the smartest engineering detail standards, global environmentally green components and e-cycling sound programs.



A Clearwater Spa has your relaxation in mind, starting with how they are built to the handcrafted details. Our goal is to give you confidence, knowing you purchased the best and longest lasting spa. Each detail is specifically chosen to give you ultimate relaxation & comfort. We build in value and quality that stands tall amongst our competitors.

There are many personal health benefits that come with the purchase of a Clearwater Spa. Here are just a few to consider:

- Stress Relief
- Relaxation
- Muscle Pain Relief
- Recovery
- Improved Sleep
- Improved Athleticism



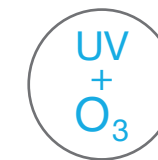


WATER CARE



CLEAR

OPTIONAL FEATURE: CLEAR is a state of the art water management system that is a Clearwater exclusive. It combines four of the best technologies available to provide you the best fresh water experience.



UV & OZONE

OPTIONAL FEATURE: The sun emits invisible light – ultraviolet light. Through leading edge technology, this natural phenomenon is reproduced inside the sanitizers of the Clearwater UVC System Technology lamps.



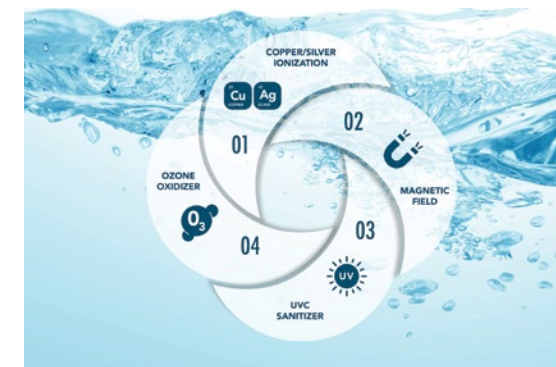
OZONE

OPTIONAL FEATURE: Clearwater Spas ozone helps clean water naturally with less chemicals. Using the latest technologies in ozone water purification, the ozonator uses corona discharge to produce ozone (O₃). Available feature for all Clearwater Spas.

THE CLEARWATER DIFFERENCE

CLEAR

EFFORTLESS WATERCARE FOR THE PERFECT SPA EXPERIENCE



CLEAR is a revolutionary watercare solution that makes hot tub ownership as easy as it is enjoyable. Continuous 24-hour circulation ensures that water is constantly filtered, removing debris and particles before they build up. Many spas only filter water for a few hours each day, but with continuous circulation, Clearwater Spas ensures cleaner, clearer water all day, every day.



STAGE 1 Silver Ionization: Silver has been trusted for centuries for its natural purifying properties. In the CLEAR System, silver ions work continuously to maintain clean, safe water.



STAGE 2 Copper Ion Algicide: Copper is a well-known, effective way to prevent the growth of unwanted organisms. Our system slowly releases copper ions at the perfect level to maintain spa water, reducing the need for additional chemicals.



STAGE 3 Magnetic Field Technology: Our magnetic technology helps particles in the water bind together, making it easier for the filters to capture them. This not only improves filtration but also gives the water a silky-smooth feel.



STAGE 4 UV-C Light Sanitization: The UV-C light technology in the CLEAR System neutralizes unwanted contaminants in the water. Originally used to sterilize drinking water, UV-C is one of the most effective methods of water sanitation available today. It's a chemical-free way to ensure your spa water stays fresh and clean.



Ozone Generator: Ozone is an EPA-approved antimicrobial oxidizer, sanitizer, and disinfectant helping to rid water of contaminants, thereby improving water clarity and reducing the need for chemicals.

WHY IS IT BETTER?

CLEAR allows you to soak in odorless, clear natural water. If your pursuit is complete body Wellness then our Clear System is your ONLY choice!!!



ENERGY EFFICIENCY



All Clearwater Spas are designed with E-Smart technology. This symbol signifies the highest energy efficiencies, the smartest engineering detail standards, global environmentally green components and e-cycling sound programs. All of Clearwater Spas are certified to California's Energy Commission (CEC) – the most stringent energy standards in the United States. We not only meet these standards – we exceed them.



Clearwater Spas takes pride in using recycled ABS to fabricate our Durafloor on all of our spas. We also recycle our wood, plastic and cardboard waste. See for yourself what this commitment to excellence looks like. Contact your Clearwater Spas dealer and get started on finding your own personal relaxation destination.



Clearwater Spas was the first company to produce an ecologically sound product, and all of our spas are produced without fiberglass resin and other destructive agents. Our EcoSpray was developed specifically to provide a solution to the styrene problem in the spa and bath industry and does not emit any volatile organic compounds (V.O.C.'s) into the air.

RESORT SERIES



5-6 PEOPLE



98-107 JETS



4 JET PUMPS

THERAPY & CONTROLS

Jet Pumps	4
Water Diverter Valve	✓
Jets, Fully Adjustable	98-107
Foot Jet	1-2
Digital Spa Control, Touchscreen	✓
Auxiliary Seat Control	✓

WATER PURIFICATION SYSTEMS

Ozone	Option
CLEAR	Option
UVC	Option
DUALL Guard Filtration	Option

COMFORT & ENTERTAINMENT

Lighted Footwell	✓
Firstchoice Lighting Package	Option
Unlimited Lighting Package	Option

DESIGN & CONSTRUCTION

Pillar Supports	✓
Synthetic Frame	✓
RTB Insulation	✓
Insulated Durafloor Base	✓
TUFFX Cabinet	✓
Duratech Cabinet Option	Option

FEATURES





MONACO

4 jet pumps | 98 jets | 5 person

93" x 93" x 37.5"



ORLANDO

4 jet pumps | 107 jets | 6 person

93" x 93" x 37.5"



BEACHCRAFT SERIES



FEATURES



6-9 PEOPLE



60-75 JETS



3 JET PUMPS

THERAPY & CONTROLS

Jet Pumps	3
Water Diverter Valve	✓
Jets, Fully Adjustable	60-75
Foot Jet	1-2
Digital Spa Control, Touchscreen	✓
Auxiliary Seat Control	✓

WATER PURIFICATION SYSTEMS

Ozone	Option
CLEAR	Option
UVC	Option
DUALL Guard Filtration	Option

COMFORT & ENTERTAINMENT

Lighted Footwell	✓
Firstchoice Lighting Package	Option
Unlimited Lighting Package	Option

DESIGN & CONSTRUCTION

Pillar Supports	✓
Synthetic Frame	✓
RTB Insulation	✓
Insulated Durafloor Base	✓
TUFFX Cabinetry	✓
Duratech Cabinet Option	Option*

* Not available for the Entertainer



Hydrotherapy Jets



Headrests



Water Feature



Digital Spa Control Touchscreen



Auxiliary Seat Control



Optional DUALL Filtration



ENTERTAINER

3 jet pumps | 57 jets | 9 person
137" x 92" x 46"



TRADITION

3 jet pumps | 67 jets | 7 person
93" x 93" x 37.5"



PEARL ISLAND

3 jet pumps | 64 jets | 6 person
93" x 93" x 37.5"



MYRTLE BEACH

3 jet pumps | 61 jets | 7 person
84" x 84" x 37.5"



ST. ANDREW

3 jet pumps | 60 jets | 6 person
84" x 84" x 37.5"

NORTHWEST SERIES



5-6 PEOPLE



50-57 JETS



2 JET PUMPS

THERAPY & CONTROLS

Jet Pumps	2
Water Diverter Valve	✓
Jets, Fully Adjustable	50-57
Foot Jet	✓
Digital Spa Control	✓
Auxiliary Seat Control	✓
Air Control Valves	✓
Foot Dome	Option

WATER PURIFICATION SYSTEMS

Ozone	Option
CLEAR	Option
UVC	Option
DUALL Guard Filtration	Option

COMFORT & ENTERTAINMENT

Lighted Footwell	✓
Firstchoice Lighting Package	Option
Unlimited Lighting Package	Option

DESIGN & CONSTRUCTION

Pillar Supports	✓
Synthetic Frame	✓
RTB Insulation	✓
Insulated Durafloor Base	✓
TUFFX Cabinet	✓
Duratech Cabinet	Option

FEATURES





BROADMOOR

2 jet pumps | 52 jets | 5 person

93" x 93" x 37.5"



CONCORDIA

2 jet pumps | 53 jets | 6 person

93" x 93" x 37.5"



LIBERTY LAKE

2 jet pumps | 51 jets | 5 person

84" x 84" x 32"



FAIRVIEW

2 jet pumps | 50 jets | 6 person

84" x 84" x 32"

FOURWINDS SERIES



3-7 PEOPLE



38-45 JETS



2 JET PUMPS

THERAPY & CONTROLS

Jet Pumps	2
Water Diverter Valve	3
Jets, Fully Adjustable	38-45
Solid State Spa Control	✓
Air Control Valves	✓

WATER PURIFICATION SYSTEMS

Ozone	Option
24 hr. Filtration System	Option
CLEAR	Option
UVC	Option
Filter Size	50 sq. ft.

COMFORT & ENTERTAINMENT

Lighted Footwell	✓
Firstchoice Lighting Package	Option
Unlimited Lighting Package	Option

DESIGN & CONSTRUCTION

Pillar Supports	✓
Synthetic Frame	✓
RTB Insulation	✓
Insulated Durafloor Base	✓
TUFFX Cabinet	✓
Duratech Cabinet	Option

FEATURES





GRAND BAHAMA

2 jet pumps | 45 jets | 7 person

93" x 93" x 37.5"



KAUAI

2 jet pumps | 45 jets | 7 person

84" x 84" x 37.5"



CARIBBEAN

2 jet pumps | 45 jets | 5 person

93" x 93" x 37.5"



TITANIUM

2 jet pumps | 45 jets | 5 person

84" x 84" x 32"



KEY LARGO

2 jet pumps | 39 jets | 6 person

76" x 76" x 32"



DAYTONA BEACH

2 jet pumps | 36 jets | 4 person

76" x 76" x 32"



TRILOGY

2 jet pumps | 33 jets | 3 person

83" x 66" x 32"



FEATURES & BENEFITS

of Starlight Series



The Starlight Series starts off the Clearwater lineup where many hot tub brands finish. Even though the Starlight series is the launching point for Clearwater Spas each model includes features that you would more commonly find on the top end models of most brands. If you are looking for the most hot tub for your dollar that you can find you can stop your search here.

There are many personal health benefits that come with the purchase of a Starlight Hot Tub. Here are just a few reasons to consider:

- Family Time
- Stress Relief
- Muscle Pain Relief
- Recovery
- Improved Sleep
- Improved Flexibility



STARLIGHT 8

2 jet pumps | 50 jets | 7 person
93" x 93" x 37.5"
(236 x 236 x 95 cm)
480 gallons (1817 L)
50/sf filter area
Weight empty 900 lbs (408 kg)



STARLIGHT 8L

2 jet pumps | 50 jets | 5 person
93" x 93" x 37.5"
(236 x 236 x 95 cm)
460 gallons (1741 L)
50/sf filter area
Weight empty 900 lbs (408 kg)



STARLIGHT 7

2 jet pumps | 40 jets | 6 person
84" x 84" x 32"
(213 x 213 x 82 cm)
350 gallons (1,325 L)
50/sf filter area
Weight empty 750 lbs (340kg)



STARLIGHT 7L

2 jet pumps | 40 jets | 5 person
84" x 84" x 32"
(213 x 213 x 82 cm)
330 gallons (1,249 L)
50/sf filter area
Weight empty 750 lbs (340kg)



STARLIGHT 6

1 jet pump | 20 jets | 6 person
76" x 76" x 32"
(193 x 193 x 82 cm)
300 gallons (1136 L)
50/sf filter area
Weight empty 420 lbs (191 kg)



STARLIGHT 6L

1 jet pump | 20 jets | 5 person
76" x 76" x 32"
(193 x 193 x 82 cm)
260 gallons (984 L)
50/sf filter area
Weight empty 420 lbs (191 kg)



STARLIGHT 6R

1 jet pump | 20 jets | 3 person
76" x 53" x 32"
(193 x 135 x 82 cm)
180 gallons (681 L)
50/sf filter area
Weight empty 360 lbs (163 kg)



3-7 PEOPLE



20-50 JETS



1-2 JET PUMPS

THERAPY & CONTROLS

- Jet Pumps
- Digital Spa Control
- Air Control Valves
- Foot Massage Jets
- Water Diverter Valve
- Therapy Controls

ENTERTAINMENT

- Basic Multicolored LED
- Water Feature
- Coasters

BENEFIT

- Hydrotherapy
- Easy Controlling
- Adjustability
- Reflexology
- Selection
- Luxury

BENEFIT

- Relaxation
- Ambiance
- Convenience

WATER PURIFICATION

- Ozone
- Single 50/sf Filtration

DESIGN & COMFORT

- Reflective Thermal Shield
- TUFFX Cabinet
- Ergonomic Seating

BENEFIT

- Optional
- Clean Water

BENEFIT

- Energy Efficiency
- Durable & Practical
- Comfort

SWIM SERIES



4+ PEOPLE



28-32 JETS

THERAPY & CONTROLS

- Water Diverter Valve ✓
- Jets, Fully Adjustable 28-32
- Air Control Valves ✓

COMFORT & ENTERTAINMENT

- Lighted Footwell ✓
- Firstchoice Lighting Package Option
- Unlimited Lighting Package Option
- Clearplay Plus Sound System Option

WATER PURIFICATION SYSTEMS

- Ozone Option
- 24 hr. Filtration System Option
- CLEAR Option
- UVC Option

DESIGN & CONSTRUCTION

- RTB Insulation ✓
- Insulated Durafloor Base ✓
- TUFFX Cabinet ✓

FEATURES



Feature Controller



Spa Fountain



Headrest



24 hr. Filtration System
Optional

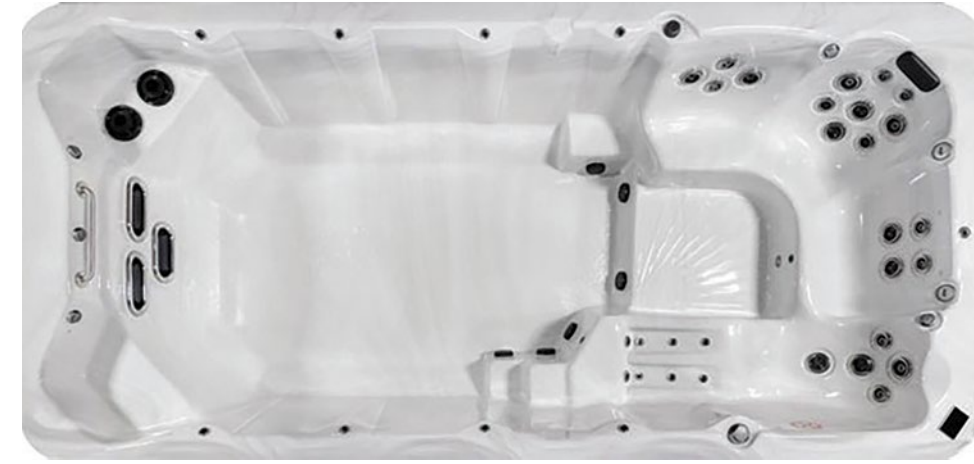


Adjustable Jets



XL14000

29 jets | 4+ person
168" x 90" x 55"



XL16000

32 Jets | 4+ Person
191" x 90" x 55"



XL14000R

28 Jets | 4+ Person
168" x 90" x 55"



XL16000R

31 Jets | 4+ Person
191" x 90" x 55"

EXCLUSIVE FEATURES

A Better Build



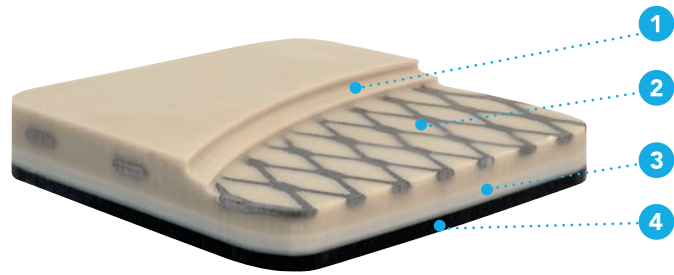
Multi-Function Pump as part of a DUALL System

The energy efficient multi-function pump works to automatically filter 100% of the water through each of the filtration systems several times a day. Because of the low power demand of this pump the cost to clean and heat your water is kept to an all time low.



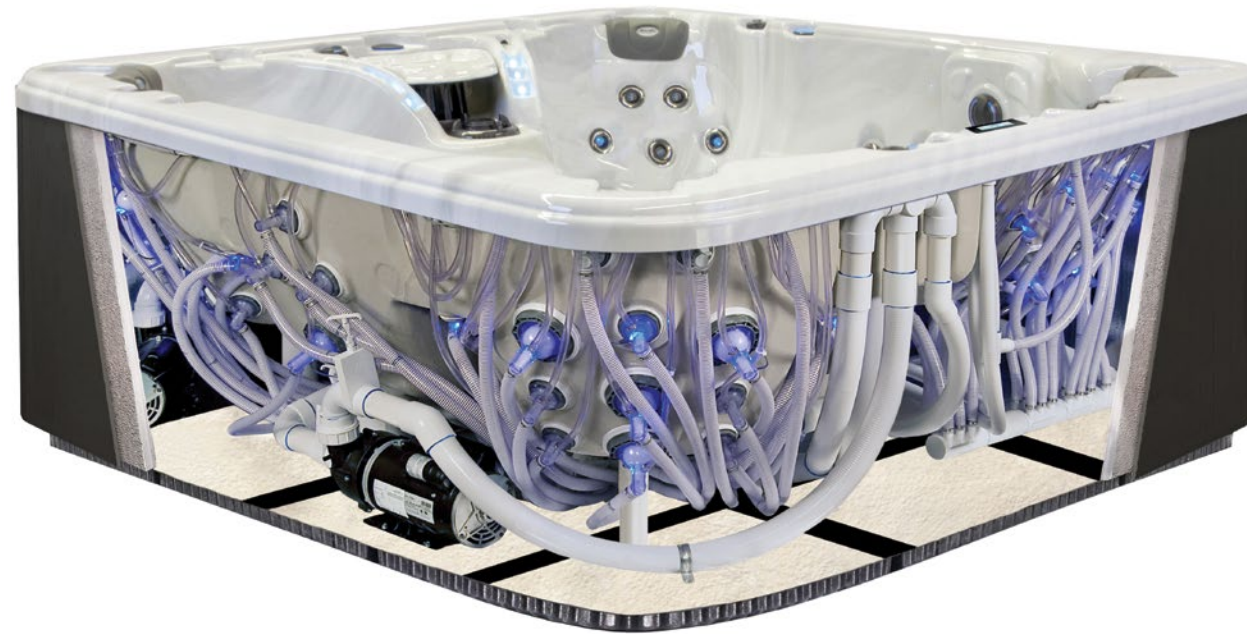
Synthetic Frame

Traditional wood frames are subject to deterioration due to exposure to water, heat, and stress. All Clearwater Spas use our unique pillar system to carry the weight of the spas, taking the stress off the frame. Now our Clearwater Spas come with our Synthetic TUFF frame. Standard on most models – optional on the Starlight series.



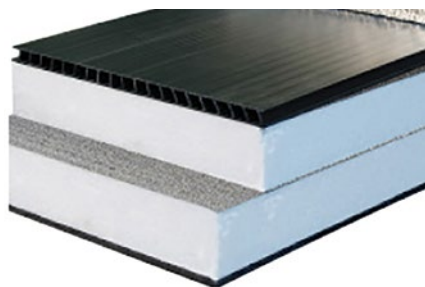
Multilayered shell system with environmentally friendly EcoSpray is the strongest in the industry

- 1 100% EcoSpray
- 2 Steel support in heavy traffic areas for ultimate strength
- 3 ABS backed acrylic for impact resistance
- 4 Acrylic shell for beauty and strength



Perimeter Insulation

Added spray form insulation to the spa including the corner to create a strong unit that is permanently connected to the shell.



Reflective Thermal Barrier (RTB) Insulation

Double-sided foil rigid insulation panels. 12% more energy efficient than other spas. This allows the thermal gain from the pumps and heater to be reflected back into the spa cabinet, heating the shell and water and saving you hundreds of dollars over the lifetime of your spa.



Durafloor

Our custom molded, fully insulated Durafloor is silicone sealed and screw bonded to our cabinet. This foundation lifts the spa off the ground, protecting the structure from moisture, bugs and other negative influences.



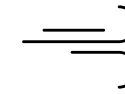
CLEARWATER SPA CONTROL

Option on Some Models



TOUCHSCREEN

The control panel is easy to operate, and made to be used with wet fingers.



THERAPY

Turn the pumps and jets on and off.



TEMPERATURE

Adjust and set the spa temperature.



LIGHTING

Change the color of your spa lights.



SETTINGS

You are able to adjust:

- Filtration
- Maintenance
- Date & Time

DURATECH PLUS CABINETS (Optional)

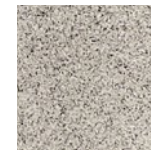


SHELLS AND CABINETS

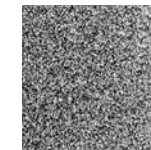
SHELL COLORS



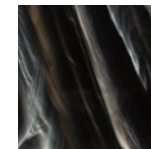
Sterling Silver



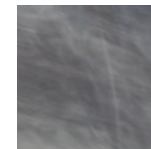
Kalahari



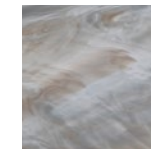
Dakota



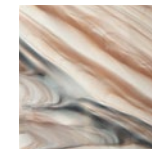
Midnight Canyon



Storm Clouds



Smoky Mountain

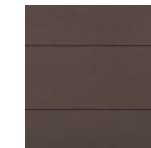


Tuscan Sun

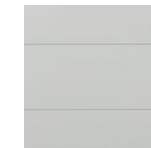
DURATECH PLUS CABINET



Gray



Brown

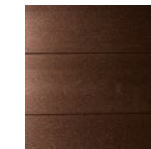


Ivory

TUFFX



Raven



American Mahogany



Gun Metal



NEW Cabinet Light Bar
(Optional Upgrade)



DuraTech Plus Cabinets: Ultra-low Maintenance

Just an occasional wash with soapy water will keep your DuraTech Plus cabinet free of dust & grime and looking its very best.

Ultimate Outdoor Performance

DuraTech Plus naturally resists splintering, rot, warping, and damage from insects and other pests.

*All series come with Sterling Silver as the standard shell color. All other colors are custom options.

HYDROTHERAPY MASSAGE



FOR A HEALTHY BODY

According to medical research, a hot tub can help those suffering from arthritis, low back pain and high blood pressure. Use of a hot tub has also proven to aid in weight loss and helps you sleep more soundly.



FUN & ENTERTAINMENT

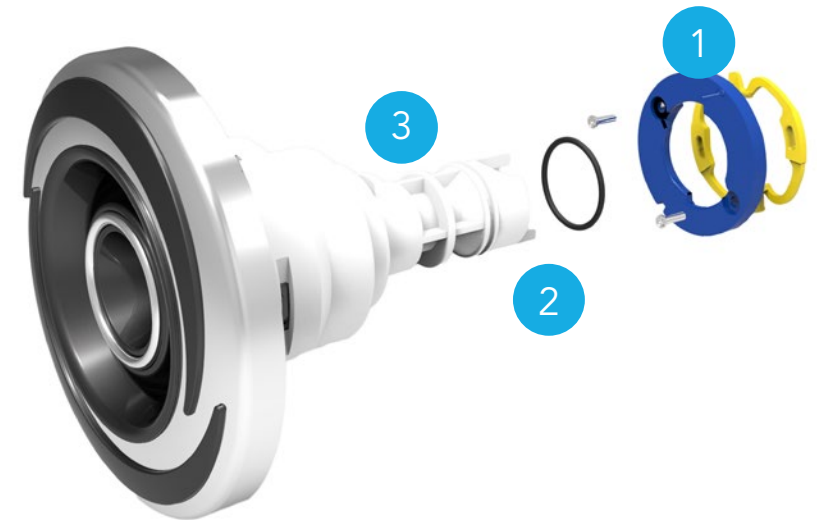
Enjoy time with family and friends. Nothing says entertainment like a Clearwater Spa. Featuring up to 107 lighted jets, a removable table accessory, and a bluetooth sound system for easy entertaining, day or night.



REFLECTION & ESCAPE

A hot tub can be an excellent stress reliever. For those moments when you want to get away, escape into a Clearwater Spa. Allow your troubles to melt away while enjoying a hydrotherapy massage in complete privacy.

CLEARWATER JETS



HIGH PRESSURE DIRECTIONAL JETS

Adjust directions for your ultimate comfort



ROTATIONAL JETS

High pressure circulating hydrotherapy massage



DOUBLE ROTATIONAL JETS

Circulating hydrotherapy massage

1

The Patented locking system ensures positive engagement between the insert and the body.

2

The o-ring seal improves vacuum and air draw by up to 46%.

3

The o-ring on the diffuser enhances the smooth rotational feel of the jet.

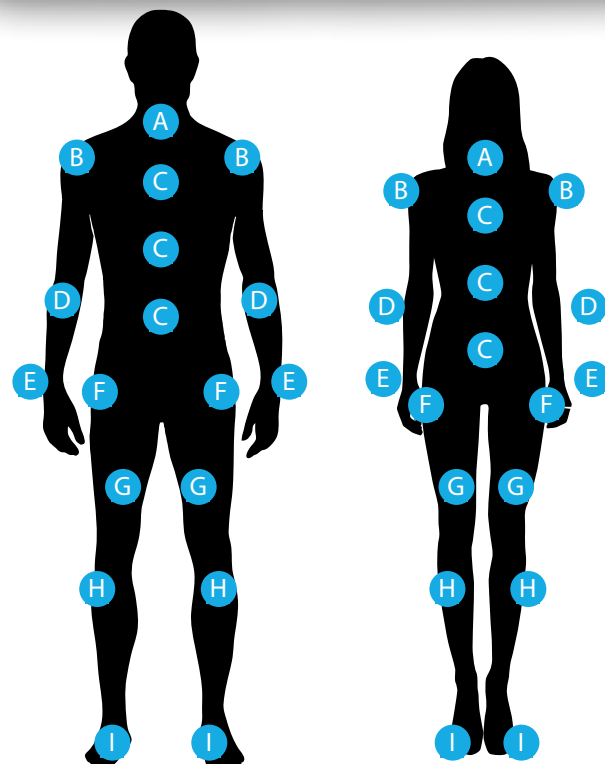
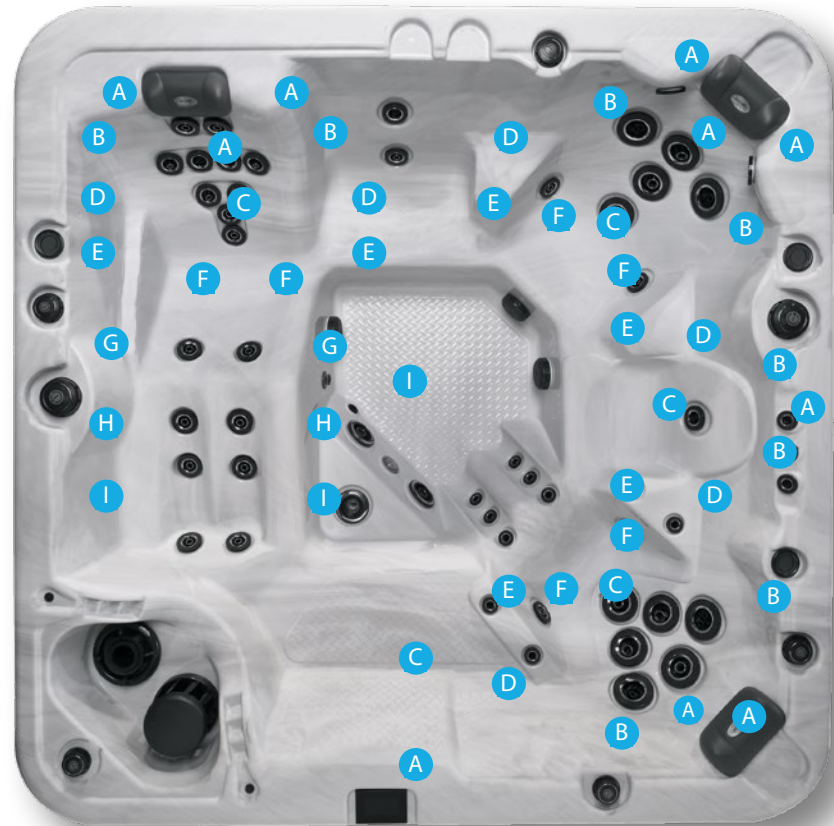
All of our jets are optimized for the particular position on the body and muscle groups they target.

We use 3 different sizes of hydro-massage therapy jets with a number of different nozzle configurations. This provides for a varied massage experience from light and fast pulsating to a slower, deeper kneading effect.

All the jets are individually adjustable for flow, and some can be tailored for speed and treatment area too.

FULL BODY HYDROTHERAPY MASSAGE

Our jets and ergonomic seating are carefully designed to give you the ultimate massage.



A Neck & Upper Back
Relieves: muscles, tightness and headaches.

C Back & Spine
Relieves: muscles, stiff joints, arthritis and improves flexibility.

E Hand & Wrist
Relieves: arthritis, carpal tunnel syndrome and joint pain.

G Thigh & Upper Leg
Relieves: muscles, cramps and joint pain.

B Shoulder & Rotator Cuff
Relieves: muscles, stiff joints and improves flexibility.

D Arm & Elbow
Relieves: arthritis, tennis elbow and carpal tunnel syndrome.

F Lower Back & Hips
Relieves: muscles, aches and sciatic hip pain.

H Lower Leg & Calf
Relieves: muscles, cramps and joint pain.

I Foot, Ankle & Heel
Relieves: muscles, plantar fasciitis, arthritis and joint pain.

CONTROLS AND ERGONOMICS

CLEARWATER SPAS ARE DESIGNED BY OUR IN-HOUSE ENGINEERS, KNOWN NOT ONLY FOR THEIR TECHNICAL EXPERTISE BUT ALSO FOR THEIR CAPSCIENTIOUS DESIGN ABILITIES.

1. LOUNGE SEAT

Our lounge seat is ergonomically designed to fit your needs in the most comfortable way. It targets areas such as your shoulders, back, legs and feet.

2. THERAPEUTIC SEAT

Our therapeutic seats are designed to offer a different kind of hydrotherapy. They use a variety of jet placements in order to make a quantifiable difference.

3. COOL DOWN SEAT

The cool down seat allows you take a break from the heat of the water but still enjoy your spa and the company of your family and friends.



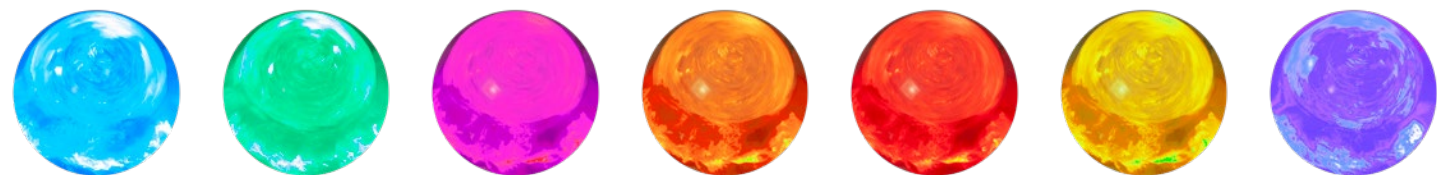
Relax Better. Sleep Better. Feel Better. Live Better.

COLOR THERAPY



Enhance your spa experience with multi-colored lighting. Change colors to suit your mood. Set to transition through all seven colors or set to one favorite.

Choose your color according to your mood:



Clearwater Spas

A PROUD USA MANUFACTURER

www.clearwaterspas.com